



# GEODYNAMICS @ GRAZ

(Working Group Stüwe)

## Annual Report 2019



Department for Earth Sciences  
University of Graz  
Universitätsplatz 2  
A-8010 Graz, Austria;  
[email: kurt.stuewe@uni-graz.at](mailto:kurt.stuewe@uni-graz.at)  
<http://wegener.uni-graz.at>  
<http://www.alpengeologie.org>  
<http://luftbildsteiermark.at>

## GROUP MEMBERS

---

### Postdoc

**Thorsten Bartosch (Part time postdoc)**  
*Interest:* Landscape evolution modelling Chile (DFG funded)  
September - December 2019

### PhD students

**Rob Watson (PhD student)**  
*Interest:* Landscape evolution of the Eastern Alps  
started in March 2019, resigned in August 2019

### Masters Students:

**Gerit Gradwohl (MSc student)**  
*Interest:* Neotectonics of the Eastern Alps  
started in September 2019

**Konstantin Hohmann (MSc student)**  
*Interest:* Neotectonics of Fischbacher Tauern  
ongoing in 2019

### Bachelor Students:

**Sebastian Stumpf (BSc)**  
*Interest:* Neotektonik des Murtal  
graduated in October 2019

**Anna Worba (BSc)**  
*Interest:* Overprinting textures in the Plankogel Detachment  
graduated in June 2019

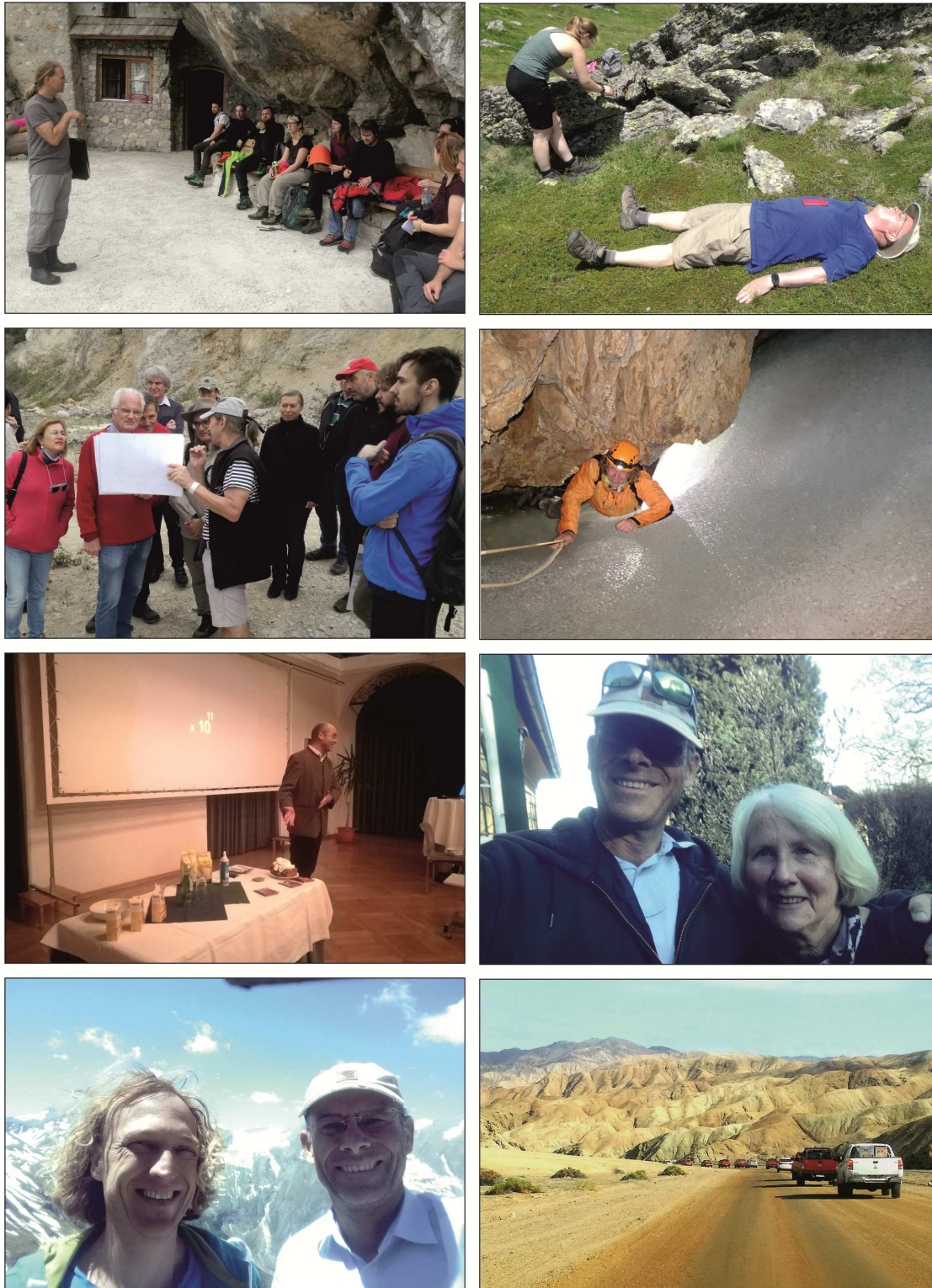
**Florian Kohler (BSc)**  
*Interest:* Field mapping of the Plankogel detachment / Slowenia  
ongoing in 2019

**Max Hessinger (BSc)**  
*Interest:* Potential Energie along oceanic transform faults  
ongoing in 2019

**Moritz Rabel (BSc)**  
*Interest:* River piracy in Traboch – Evidence from Löss  
ongoing in 2019

**Katrin Lontschar (BSc)**  
*Interest:* Neotectonics of southern Saualpe  
ongoing in 2019





**Figure 1:** (a) Project partner Lukas Plan with Students on the Krippenstein. (b) Mark Brandon being exhausted whilst students take samples on the Koralpe in June. (c) Field trip with Stefan Schmidt during the ILP Balaton conference in October. (d) Jörg Robl getting serious with sampling: sliding down a frozen waterfall in the Eisriesenwelt of the Tennengebirge. (e) Explaining how the Alps work with cake-baking during a public lecture in Leoben. (f) Long term cooperation partner Lynn Evans from Melbourne visited in Summer too. (g) Kurt Stüwe and Jörg Robl in front of Grossglockner during a field trip with Mark Brandon in June. (h) With 60 Germans crossing the Atacama desert in March within the startup workshop of the EARTHSHAPE project.

## FUNDED RESEARCH PROJECTS

---

- Archaeological documentation of potentially stone ages monuments in Styria  
**Funded by:** Hans Adam II Fürst von Liechtenstein (in cooperation with Heinz Kusch)  
**Total funding in 2019:** ~ 20.000,- (Project terminated in September)
- Elevated Low Relief Landscapes in Mountain Belts: Active Tectonics or Glacial Reshaping? A Case Study in the Eastern Alps  
**Funded by:** FWF together with Robl/Salzburg (half of the funding in Graz)  
**Total funding in 2018- 2021:** 350.000,-
- Landscape evolution constrained by the intraplate stress field: Direct coupling of tectonics and the influence of biota on long-term geomorphic development in the Chilean Coastal Ranges  
**Funded by:** DFG (a paralleling FWF project over 150.000,- was not funded in Dec. 2018 and a resubmission in spring 2019 was rejected in June 2019)  
**Total funding in 2019:** 8700,-



**Figure 2:** (a) With PhD student Rob Watson in front of the Mammuthöhle in the Dachstein Massif. (b) New MSc student Gerit Gradwohl really takes to the project on the Krippenstein karst surface. (c) Gerit Gradwohl and Jörg Robl wonder if the next sample is worth it (Junihöhle in September). (d) Jörg Robl planning to poison his co-workers with home made chilli beans.

## SCIENTIFIC PUBLICATIONS 2019

---

### Articles in refereed journals:

- Bartosch T., Stüwe K. (2019). Evidence for pre-Pleistocene landforms in the Eastern Alps: Geomorphological constraints from the Gurktal Alps. *Austrian Journal of Earth Science*, v. 112, 84-102, doi 10.17738/ajes.2019.0006
- Stumpf S., Stüwe K. (2019). Aspekte der morphologischen Entwicklung des Murtales zwischen Bruck und Graz. Eine Augenstein Provenienz Studie. *Mitteilungen des Naturwissenschaftlichen Vereins für Steiermark*, v. 149, 63-83.

### Abstracts and conference presentations:

- Stüwe K., Bartosch T., Hergarten S., Robl J. (2019). Predicting surface uplift and erosion in the Chilean Coastal Ranges using mechanically controlled modelling. *EGU Pico. Geophysical Research Abstracts Vol. 21, EGU2019-70??, 2019*
- Hohmann K., Stüwe K. (2019). Landscape Evolution in the light of young tectonic uplift at the eastern margin of the Alps: A geomorphological map of the Fischbach Alps. *EGU Poster. Geophysical Research Abstracts Vol. 21, EGU2019-7011-1, 2019*
- Bartosch T., Stüwe K. (2019). A geomorphic map for the Gurktal Alps. Evidence for pre-Pleistocene landforms. *Arbeitstagung der GBA Murau..*
- Stüwe K., Schorn S. (2019). The Tbt-Diagram. An alternative to Pseudosections? *Mitteilungen der Österreichischen Mineralogischen Gesellschaft, Vol. 165; MinPet 2019, Graz, Austria*
- Schorn S. and Stüwe K. (2019). On the hydration in high-grade metamorphic terranes. *Mitteilungen der Österreichischen Mineralogischen Gesellschaft, Vol. 165; MinPet 2019, Graz, Austria*
- Stüwe K., Robl J. (2019). Young Uplift of the Eastern Alps. A progress report. *Alps Array meeting Frankfurt*
- Stüwe K., Robl J. (2019). Young Uplift at the Eastern end of the Alps. Evidence for Uplift unrelated to the inversion of the Pannonian Basin. *ILP Balaton conference.*
- Sizova E., Gerya T., Brown M., Stüwe K., Hauzenberger C., Fritz H., Faryad S.W. (2019). What can we learn from numerical experiments about continental collision during the Phanerozoic and Precambrian Eons? *SGTSG and SGSEG meetings Convergence on the Coast. Port Lincoln Australia.*

### Public Relations Articles and Talks:

- Stüwe K. (2019). Auf den Spuren von Alfred Wegener: Plattentektonik von Grönland bis ins schöne Österreich. *Meierhof-Güttenbach 20.7.2019, Gsellmann public lecture*
- Stüwe K. (2019). Moderne Ideen zur tektonischen, petrologischen und geomorphologischen Entwicklung der Eklogit Typ Lokalität in der Koralpe, Österreich., *Jena Universität 21.11.2019, Seminar Vortrag.*



- Stüwe K. (2019). Wie die Alpen entstanden sind. Spektakuläre Geologie aus der Heimat für Jedermann. Obersteirischer Kulturbund Leoben 14.1.2019. Öffentlicher Vortrag.
- Stüwe K. (2019). 100 Jahre Kontinentaldrift-Theorie – Die Alfred-Wegener-Gedenk- Expedition 2014. Greifswald 22.6.2019. Öffentlicher Vortrag im Rahmen der Vernissage der Ausstellung „Wegbereiter der Geowissenschaften: 50 Portraits von Geowissenschaftlern aus fünf Jahrhunderten.“
- Stüwe K. (2019). Reaching the summit. Geology and climbing of the Zugspitze Region. LSX meeting with Mercedes powerpoint presentation.



**Figure 3:** (a) PhD student Rob Watson trying to understand cave statistics. (b) Konstantin Hohmann mapping planation surfaces. (c) Lukas Plan, Moritz Liebl, Rob Watson, Kurt Stüwe, Derek Fabel and Jörg Robl after a successful trip in the Mammuthöhle. (d) Gerit Gradwohl and Jörg Robl in the Junihöhle in September.

## FIELD TRIPS & OTHER WORK RELATED TRAVEL

---

- 3 weeks field work in Chile for the EARTHSHAPE Start up meeting in March
- Two trips to Garmisch Partenkirchen with the LSX Daimler meetings (Feb and March)

- Field trip with Lukas Plan and students to Dachstein in May.
- ELEVATE Start up meeting with Derek Fabel, Lukas Plan, both project PhD students and Jörg Robl in June.
- A second ELEVATE Start up field trip with Gerit Gradwohl 3 days in September.
- 1 week field trip with Mark Brandon across the Eastern Alps in June.
- Trip to Greifswald in German to open an exhibition and give a talk.
- ILP Balaton Conference visit in Heviz/Balaton in October.
- Alps Array meeting in Frankfurt.
- EGU Conference in Wien in April.

## VISITORS

---

- Visit by Mark Brandon for Alps field trip (10.6. - 20.6.)
- Derek Fabel
- Lynn Evans





**Figure 4:** (a) Mark Brandon, Jörg Robl and Kurt Stüwe in the field in June. (b) With Martin Meschede and Wolfgang Frisch in Greifswald during the exhibition opening in June. (c) Laszlo Fodor explaining wind blown striations during the ILP Balaton conference. (d) Project partners Thomas Hickler and Todd Ehlers enjoying the Alps Array meeting in Frankfurt in November. (e) Rob Watson in the Badl cave in January. (f) Field work in Chile during the start up meeting of the EARTHSHAPE project in March. (g) The strangest rock in the world: Orbiculites in Chile. (h) Rob Watson and Lukas Plan in front of the Mammuthöhle during field work in Mai.



## TEACHING AND EDITING ACTIVITIES

---

### EDITORIAL RESPONSIBILITIES

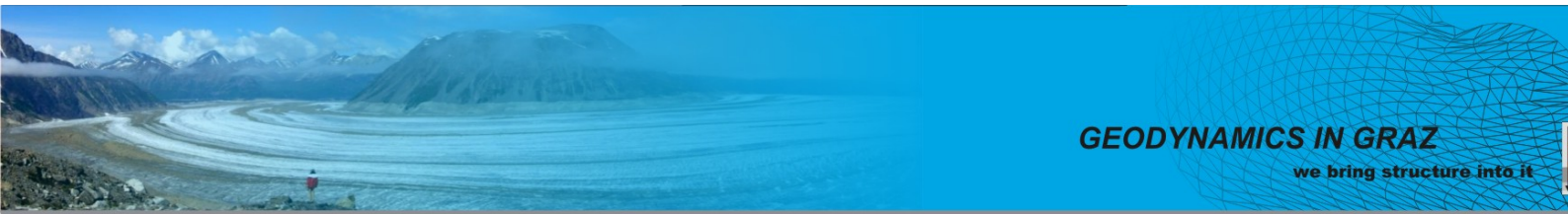
- Lecture Notes in Earth Science (Springer) (Editor)
- Journal of the Virtual Explorer (editorial board member)
- Austrian Journal of Earth Science (editorial board member)

### TEACHING SUMMER TERM 2019:

- Geologie von Österreich (Lehramt, etwa 80 Students, 2 Tutors)
- Neotectonics and tectonic geomorphology (MSc curriculum)
- Geological II Field trip (Präbichl – 1 day)

### TEACHING WINTER TERM 2019/20:

- Geodynamics of the Lithosphere (MSc curriculum)
- Tectonic Modelling (MSc curriculum)
- Erdwissenschaftliches Seminar (BSc)
- Geologie der Erde (BSc)
- First Year field trip (with Hauzenberger)



# GEODYNAMICS @ GRAZ

(Working Group Stüwe)

## Annual Report 2019



Department for Earth Sciences  
University of Graz  
Universitätsplatz 2  
A-8010 Graz, Austria;  
[email: kurt.stuewe@uni-graz.at](mailto:kurt.stuewe@uni-graz.at)  
<http://wegener.uni-graz.at>  
<http://www.alpengeologie.org>  
<http://luftbildsteiermark.at>

## GROUP MEMBERS

---

### Postdoc

**Thorsten Bartosch (Part time postdoc)**  
*Interest:* Landscape evolution modelling Chile (DFG funded)  
September - December 2019

### PhD students

**Rob Watson (PhD student)**  
*Interest:* Landscape evolution of the Eastern Alps  
started in March 2019, resigned in August 2019

### Masters Students:

**Gerit Gradwohl (MSc student)**  
*Interest:* Neotectonics of the Eastern Alps  
started in September 2019

**Konstantin Hohmann (MSc student)**  
*Interest:* Neotectonics of Fischbacher Tauern  
ongoing in 2019

### Bachelor Students:

**Sebastian Stumpf (BSc)**  
*Interest:* Neotektonik des Murtal  
graduated in October 2019

**Anna Worba (BSc)**  
*Interest:* Overprinting textures in the Plankogel Detachment  
graduated in June 2019

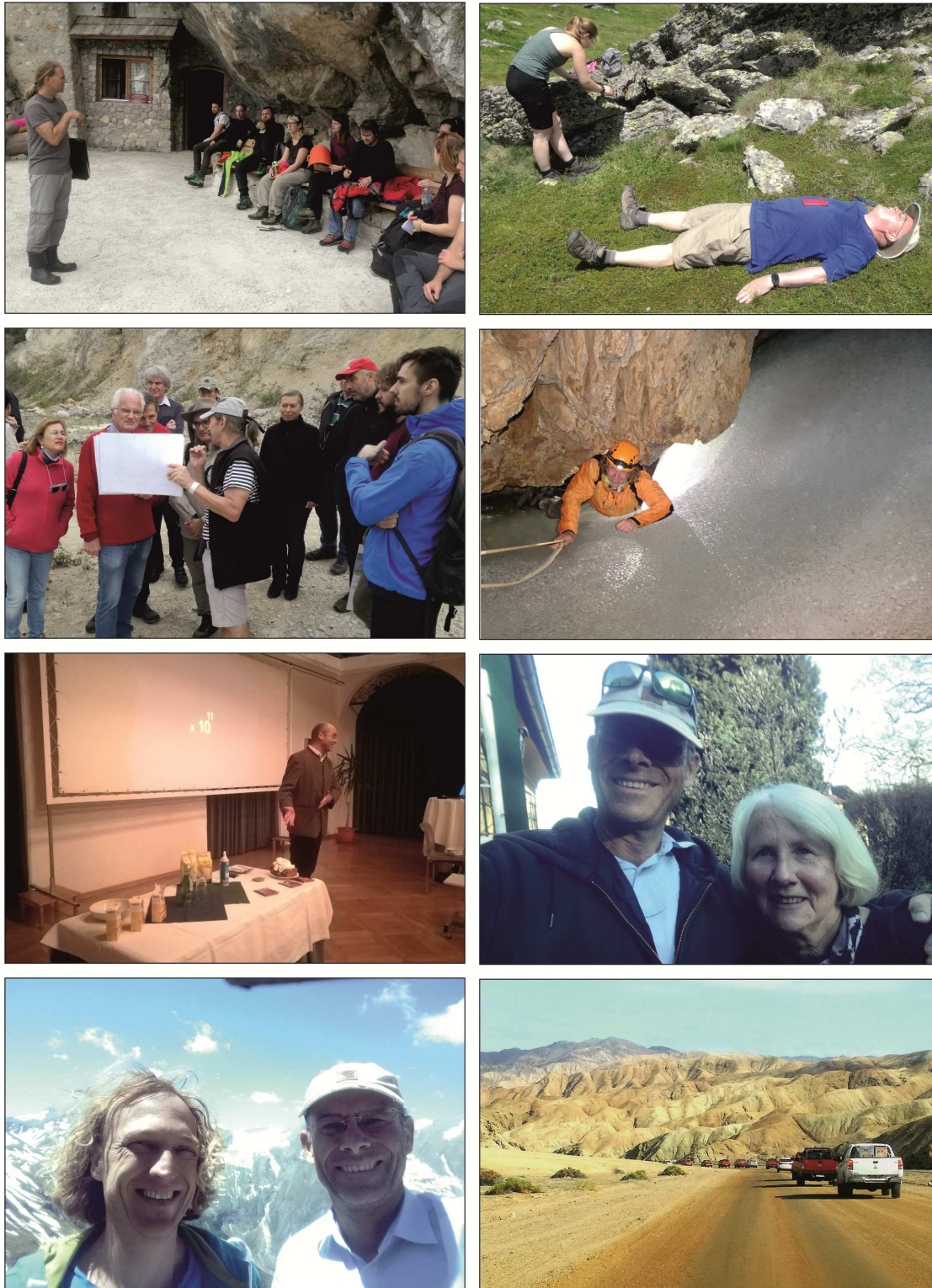
**Florian Kohler (BSc)**  
*Interest:* Field mapping of the Plankogel detachment / Slowenia  
ongoing in 2019

**Max Hessinger (BSc)**  
*Interest:* Potential Energie along oceanic transform faults  
ongoing in 2019

**Moritz Rabel (BSc)**  
*Interest:* River piracy in Traboch – Evidence from Löss  
ongoing in 2019

**Katrin Lontschar (BSc)**  
*Interest:* Neotectonics of southern Saualpe  
ongoing in 2019





**Figure 1:** (a) Project partner Lukas Plan with Students on the Krippenstein. (b) Mark Brandon being exhausted whilst students take samples on the Koralpe in June. (c) Field trip with Stefan Schmidt during the ILP Balaton conference in October. (d) Jörg Robl getting serious with sampling: sliding down a frozen waterfall in the Eisriesenwelt of the Tennengebirge. (e) Explaining how the Alps work with cake-baking during a public lecture in Leoben. (f) Long term cooperation partner Lynn Evans from Melbourne visited in Summer too. (g) Kurt Stüwe and Jörg Robl in front of Grossglockner during a field trip with Mark Brandon in June. (h) With 60 Germans crossing the Atacama desert in March within the startup workshop of the EARTHSHAPE project.

## FUNDED RESEARCH PROJECTS

---

- Archaeological documentation of potentially stone ages monuments in Styria  
**Funded by:** Hans Adam II Fürst von Liechtenstein (in cooperation with Heinz Kusch)  
**Total funding in 2019:** ~ 20.000,- (Project terminated in September)
- Elevated Low Relief Landscapes in Mountain Belts: Active Tectonics or Glacial Reshaping? A Case Study in the Eastern Alps  
**Funded by:** FWF together with Robl/Salzburg (half of the funding in Graz)  
**Total funding in 2018- 2021:** 350.000,-
- Landscape evolution constrained by the intraplate stress field: Direct coupling of tectonics and the influence of biota on long-term geomorphic development in the Chilean Coastal Ranges  
**Funded by:** DFG (a paralleling FWF project over 150.000,- was not funded in Dec. 2018 and a resubmission in spring 2019 was rejected in June 2019)  
**Total funding in 2019:** 8700,-



**Figure 2:** (a) With PhD student Rob Watson in front of the Mammuthöhle in the Dachstein Massif. (b) New MSc student Gerit Gradwohl really takes to the project on the Krippenstein karst surface. (c) Gerit Gradwohl and Jörg Robl wonder if the next sample is worth it (Junihöhle in September). (d) Jörg Robl planning to poison his co-workers with home made chilli beans.

## SCIENTIFIC PUBLICATIONS 2019

---

### Articles in refereed journals:

- Bartosch T., Stüwe K. (2019). Evidence for pre-Pleistocene landforms in the Eastern Alps: Geomorphological constraints from the Gurktal Alps. *Austrian Journal of Earth Science*, v. 112, 84-102, doi 10.17738/ajes.2019.0006
- Stumpf S., Stüwe K. (2019). Aspekte der morphologischen Entwicklung des Murtales zwischen Bruck und Graz. Eine Augenstein Provenienz Studie. *Mitteilungen des Naturwissenschaftlichen Vereins für Steiermark*, v. 149, 63-83.

### Abstracts and conference presentations:

- Stüwe K., Bartosch T., Hergarten S., Robl J. (2019). Predicting surface uplift and erosion in the Chilean Coastal Ranges using mechanically controlled modelling. *EGU Pico. Geophysical Research Abstracts Vol. 21, EGU2019-70??, 2019*
- Hohmann K., Stüwe K. (2019). Landscape Evolution in the light of young tectonic uplift at the eastern margin of the Alps: A geomorphological map of the Fischbach Alps. *EGU Poster. Geophysical Research Abstracts Vol. 21, EGU2019-7011-1, 2019*
- Bartosch T., Stüwe K. (2019). A geomorphic map for the Gurktal Alps. Evidence for pre-Pleistocene landforms. *Arbeitstagung der GBA Murau..*
- Stüwe K., Schorn S. (2019). The Tbt-Diagram. An alternative to Pseudosections? *Mitteilungen der Österreichischen Mineralogischen Gesellschaft, Vol. 165; MinPet 2019, Graz, Austria*
- Schorn S. and Stüwe K. (2019). On the hydration in high-grade metamorphic terranes. *Mitteilungen der Österreichischen Mineralogischen Gesellschaft, Vol. 165; MinPet 2019, Graz, Austria*
- Stüwe K., Robl J. (2019). Young Uplift of the Eastern Alps. A progress report. *Alps Array meeting Frankfurt*
- Stüwe K., Robl J. (2019). Young Uplift at the Eastern end of the Alps. Evidence for Uplift unrelated to the inversion of the Pannonian Basin. *ILP Balaton conference.*
- Sizova E., Gerya T., Brown M., Stüwe K., Hauzenberger C., Fritz H., Faryad S.W. (2019). What can we learn from numerical experiments about continental collision during the Phanerozoic and Precambrian Eons? *SGTSG and SGSEG meetings Convergence on the Coast. Port Lincoln Australia.*

### Public Relations Articles and Talks:

- Stüwe K. (2019). Auf den Spuren von Alfred Wegener: Plattentektonik von Grönland bis ins schöne Österreich. *Meierhof-Güttenbach 20.7.2019, Gsellmann public lecture*
- Stüwe K. (2019). Moderne Ideen zur tektonischen, petrologischen und geomorphologischen Entwicklung der Eklogit Typ Lokalität in der Koralpe, Österreich., *Jena Universität 21.11.2019, Seminar Vortrag.*



- Stüwe K. (2019). Wie die Alpen entstanden sind. Spektakuläre Geologie aus der Heimat für Jedermann. Obersteirischer Kulturbund Leoben 14.1.2019. Öffentlicher Vortrag.
- Stüwe K. (2019). 100 Jahre Kontinentaldrift-Theorie – Die Alfred-Wegener-Gedenk- Expedition 2014. Greifswald 22.6.2019. Öffentlicher Vortrag im Rahmen der Vernissage der Ausstellung „Wegbereiter der Geowissenschaften: 50 Portraits von Geowissenschaftlern aus fünf Jahrhunderten.“
- Stüwe K. (2019). Reaching the summit. Geology and climbing of the Zugspitze Region. LSX meeting with Mercedes powerpoint presentation.



**Figure 3:** (a) PhD student Rob Watson trying the understand cave statistics. (b) Konstantin Hohmann mapping planation surfaces. (c) Lukas Plan, Moritz Liebl, Rob Watson, Kurt Stüwe, Derek Fabel and Jörg Robl after a successful trip in the Mammuthöhle. (d) Gerit Gradwohl and Jörg Robl in the Junihöhle in September.

## FIELD TRIPS & OTHER WORK RELATED TRAVEL

---

- 3 weeks field work in Chile for the EARTHSHAPE Start up meeting in March
- Two trips to Garmisch Partenkirchen with the LSX Daimler meetings (Feb and March)

- Field trip with Lukas Plan and students to Dachstein in May.
- ELEVATE Start up meeting with Derek Fabel, Lukas Plan, both project PhD students and Jörg Robl in June.
- A second ELEVATE Start up field trip with Gerit Gradwohl 3 days in September.
- 1 week field trip with Mark Brandon across the Eastern Alps in June.
- Trip to Greifswald in German to open an exhibition and give a talk.
- ILP Balaton Conference visit in Heviz/Balaton in October.
- Alps Array meeting in Frankfurt.
- EGU Conference in Wien in April.

## VISITORS

---

- Visit by Mark Brandon for Alps field trip (10.6. - 20.6.)
- Derek Fabel
- Lynn Evans





**Figure 4:** (a) Mark Brandon, Jörg Robl and Kurt Stüwe in the field in June. (b) With Martin Meschede and Wolfgang Frisch in Greifswald during the exhibition opening in June. (c) Laszlo Fodor explaining wind blown striations during the ILP Balaton conference. (d) Project partners Thomas Hickler and Todd Ehlers enjoying the Alps Array meeting in Frankfurt in November. (e) Rob Watson in the Badl cave in January. (f) Field work in Chile during the start up meeting of the EARTHSHAPE project in March. (g) The strangest rock in the world: Orbiculites in Chile. (h) Rob Watson and Lukas Plan in front of the Mammuthöhle during field work in Mai.



## TEACHING AND EDITING ACTIVITIES

---

### EDITORIAL RESPONSIBILITIES

- Lecture Notes in Earth Science (Springer) (Editor)
- Journal of the Virtual Explorer (editorial board member)
- Austrian Journal of Earth Science (editorial board member)

### TEACHING SUMMER TERM 2019:

- Geologie von Österreich (Lehramt, etwa 80 Students, 2 Tutors)
- Neotectonics and tectonic geomorphology (MSc curriculum)
- Geological II Field trip (Präbichl – 1 day)

### TEACHING WINTER TERM 2019/20:

- Geodynamics of the Lithosphere (MSc curriculum)
- Tectonic Modelling (MSc curriculum)
- Erdwissenschaftliches Seminar (BSc)
- Geologie der Erde (BSc)
- First Year field trip (with Hauzenberger)



# GEODYNAMICS @ GRAZ

(Working Group Stüwe)

## Annual Report 2019



Department for Earth Sciences  
University of Graz  
Universitätsplatz 2  
A-8010 Graz, Austria;  
[email: kurt.stuewe@uni-graz.at](mailto:kurt.stuewe@uni-graz.at)  
<http://wegener.uni-graz.at>  
<http://www.alpengeologie.org>  
<http://luftbildsteiermark.at>

## GROUP MEMBERS

---

### Postdoc

**Thorsten Bartosch (Part time postdoc)**  
*Interest:* Landscape evolution modelling Chile (DFG funded)  
September - December 2019

### PhD students

**Rob Watson (PhD student)**  
*Interest:* Landscape evolution of the Eastern Alps  
started in March 2019, resigned in August 2019

### Masters Students:

**Gerit Gradwohl (MSc student)**  
*Interest:* Neotectonics of the Eastern Alps  
started in September 2019

**Konstantin Hohmann (MSc student)**  
*Interest:* Neotectonics of Fischbacher Tauern  
ongoing in 2019

### Bachelor Students:

**Sebastian Stumpf (BSc)**  
*Interest:* Neotektonik des Murtal  
graduated in October 2019

**Anna Worba (BSc)**  
*Interest:* Overprinting textures in the Plankogel Detachment  
graduated in June 2019

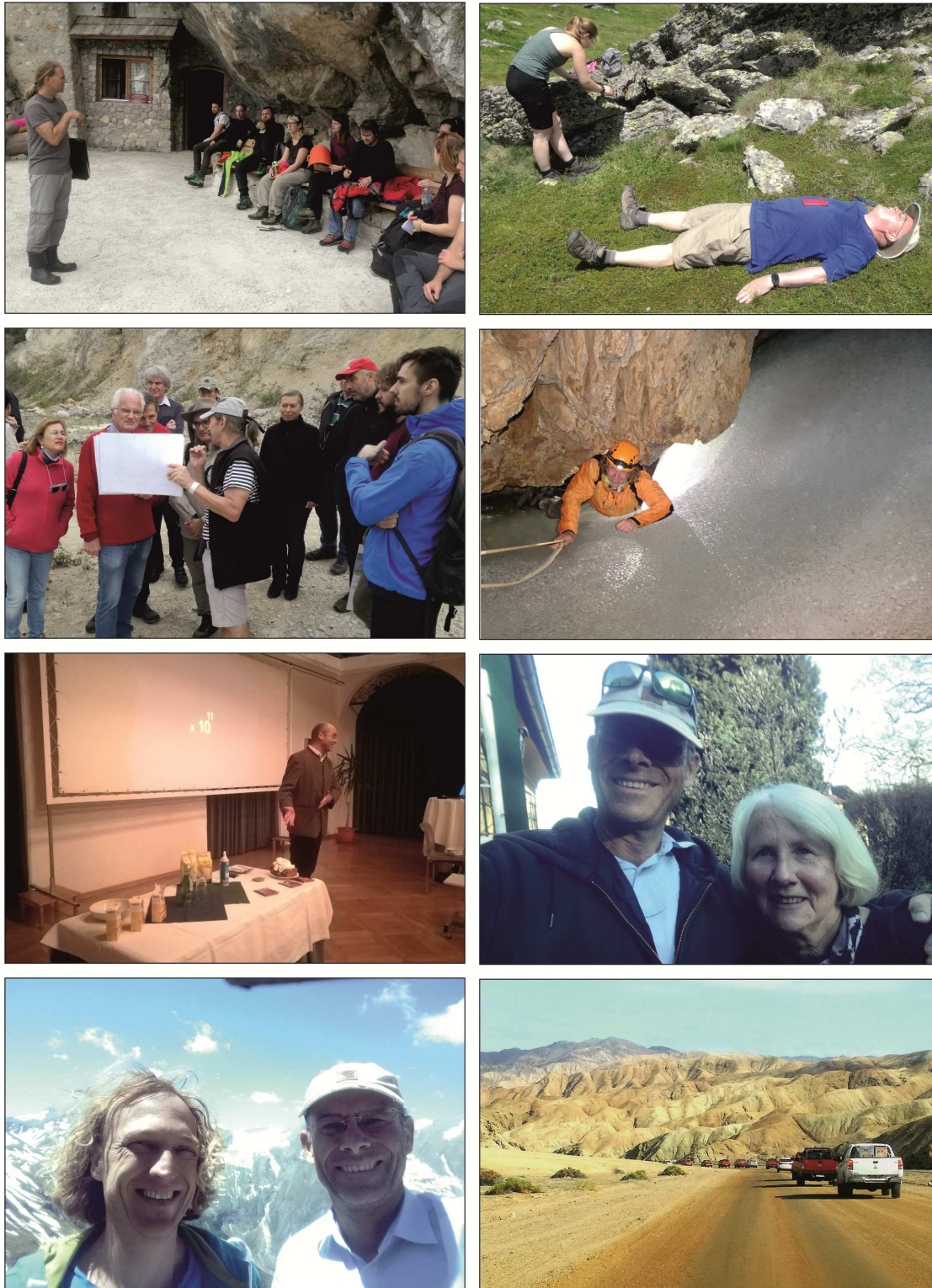
**Florian Kohler (BSc)**  
*Interest:* Field mapping of the Plankogel detachment / Slowenia  
ongoing in 2019

**Max Hessinger (BSc)**  
*Interest:* Potential Energie along oceanic transform faults  
ongoing in 2019

**Moritz Rabel (BSc)**  
*Interest:* River piracy in Traboch – Evidence from Löss  
ongoing in 2019

**Katrin Lontschar (BSc)**  
*Interest:* Neotectonics of southern Saualpe  
ongoing in 2019





**Figure 1:** (a) Project partner Lukas Plan with Students on the Krippenstein. (b) Mark Brandon being exhausted whilst students take samples on the Koralpe in June. (c) Field trip with Stefan Schmidt during the ILP Balaton conference in October. (d) Jörg Robl getting serious with sampling: sliding down a frozen waterfall in the Eisriesenwelt of the Tennengebirge. (e) Explaining how the Alps work with cake-baking during a public lecture in Leoben. (f) Long term cooperation partner Lynn Evans from Melbourne visited in Summer too. (g) Kurt Stüwe and Jörg Robl in front of Grossglockner during a field trip with Mark Brandon in June. (h) With 60 Germans crossing the Atacama desert in March within the startup workshop of the EARTHSHAPE project.

## FUNDED RESEARCH PROJECTS

---

- Archaeological documentation of potentially stone ages monuments in Styria  
**Funded by:** Hans Adam II Fürst von Liechtenstein (in cooperation with Heinz Kusch)  
**Total funding in 2019:** ~ 20.000,- (Project terminated in September)
- Elevated Low Relief Landscapes in Mountain Belts: Active Tectonics or Glacial Reshaping? A Case Study in the Eastern Alps  
**Funded by:** FWF together with Robl/Salzburg (half of the funding in Graz)  
**Total funding in 2018- 2021:** 350.000,-
- Landscape evolution constrained by the intraplate stress field: Direct coupling of tectonics and the influence of biota on long-term geomorphic development in the Chilean Coastal Ranges  
**Funded by:** DFG (a paralleling FWF project over 150.000,- was not funded in Dec. 2018 and a resubmission in spring 2019 was rejected in June 2019)  
**Total funding in 2019:** 8700,-



**Figure 2:** (a) With PhD student Rob Watson in front of the Mammuthöhle in the Dachstein Massif. (b) New MSc student Gerit Gradwohl really takes to the project on the Krippenstein karst surface. (c) Gerit Gradwohl and Jörg Robl wonder if the next sample is worth it (Junihöhle in September). (d) Jörg Robl planning to poison his co-workers with home made chilli beans.

## SCIENTIFIC PUBLICATIONS 2019

---

### Articles in refereed journals:

- Bartosch T., Stüwe K. (2019). Evidence for pre-Pleistocene landforms in the Eastern Alps: Geomorphological constraints from the Gurktal Alps. *Austrian Journal of Earth Science*, v. 112, 84-102, doi 10.17738/ajes.2019.0006
- Stumpf S., Stüwe K. (2019). Aspekte der morphologischen Entwicklung des Murtales zwischen Bruck und Graz. Eine Augenstein Provenienz Studie. *Mitteilungen des Naturwissenschaftlichen Vereins für Steiermark*, v. 149, 63-83.

### Abstracts and conference presentations:

- Stüwe K., Bartosch T., Hergarten S., Robl J. (2019). Predicting surface uplift and erosion in the Chilean Coastal Ranges using mechanically controlled modelling. EGU Pico. *Geophysical Research Abstracts Vol. 21, EGU2019-70??, 2019*
- Hohmann K., Stüwe K. (2019). Landscape Evolution in the light of young tectonic uplift at the eastern margin of the Alps: A geomorphological map of the Fischbach Alps. EGU Poster. *Geophysical Research Abstracts Vol. 21, EGU2019-7011-1, 2019*
- Bartosch T., Stüwe K. (2019). A geomorphic map for the Gurktal Alps. Evidence for pre-Pleistocene landforms. *Arbeitstagung der GBA Murau..*
- Stüwe K., Schorn S. (2019). The Tbt-Diagram. An alternative to Pseudosections? *Mitteilungen der Österreichischen Mineralogischen Gesellschaft, Vol. 165; MinPet 2019, Graz, Austria*
- Schorn S. and Stüwe K. (2019). On the hydration in high-grade metamorphic terranes. *Mitteilungen der Österreichischen Mineralogischen Gesellschaft, Vol. 165; MinPet 2019, Graz, Austria*
- Stüwe K., Robl J. (2019). Young Uplift of the Eastern Alps. A progress report. *Alps Array meeting Frankfurt*
- Stüwe K., Robl J. (2019). Young Uplift at the Eastern end of the Alps. Evidence for Uplift unrelated to the inversion of the Pannonian Basin. *ILP Balaton conference.*
- Sizova E., Gerya T., Brown M., Stüwe K., Hauzenberger C., Fritz H., Faryad S.W. (2019). What can we learn from numerical experiments about continental collision during the Phanerozoic and Precambrian Eons? *SGTSG and SGSEG meetings Convergence on the Coast. Port Lincoln Australia.*

### Public Relations Articles and Talks:

- Stüwe K. (2019). Auf den Spuren von Alfred Wegener: Plattentektonik von Grönland bis ins schöne Österreich. *Meierhof-Güttenbach 20.7.2019, Gsellmann public lecture*
- Stüwe K. (2019). Moderne Ideen zur tektonischen, petrologischen und geomorphologischen Entwicklung der Eklogit Typ Lokalität in der Koralpe, Österreich., *Jena Universität 21.11.2019, Seminar Vortrag.*



- Stüwe K. (2019). Wie die Alpen entstanden sind. Spektakuläre Geologie aus der Heimat für Jedermann. Obersteirischer Kulturbund Leoben 14.1.2019. Öffentlicher Vortrag.
- Stüwe K. (2019). 100 Jahre Kontinentaldrift-Theorie – Die Alfred-Wegener-Gedenk- Expedition 2014. Greifswald 22.6.2019. Öffentlicher Vortrag im Rahmen der Vernissage der Ausstellung „Wegbereiter der Geowissenschaften: 50 Portraits von Geowissenschaftlern aus fünf Jahrhunderten.“
- Stüwe K. (2019). Reaching the summit. Geology and climbing of the Zugspitze Region. LSX meeting with Mercedes powerpoint presentation.



**Figure 3:** (a) PhD student Rob Watson trying to understand cave statistics. (b) Konstantin Hohmann mapping planation surfaces. (c) Lukas Plan, Moritz Liebl, Rob Watson, Kurt Stüwe, Derek Fabel and Jörg Robl after a successful trip in the Mammuthöhle. (d) Gerit Gradwohl and Jörg Robl in the Junihöhle in September.

## FIELD TRIPS & OTHER WORK RELATED TRAVEL

---

- 3 weeks field work in Chile for the EARTHSHAPE Start up meeting in March
- Two trips to Garmisch Partenkirchen with the LSX Daimler meetings (Feb and March)

- Field trip with Lukas Plan and students to Dachstein in May.
- ELEVATE Start up meeting with Derek Fabel, Lukas Plan, both project PhD students and Jörg Robl in June.
- A second ELEVATE Start up field trip with Gerit Gradwohl 3 days in September.
- 1 week field trip with Mark Brandon across the Eastern Alps in June.
- Trip to Greifswald in German to open an exhibition and give a talk.
- ILP Balaton Conference visit in Heviz/Balaton in October.
- Alps Array meeting in Frankfurt.
- EGU Conference in Wien in April.

## VISITORS

---

- Visit by Mark Brandon for Alps field trip (10.6. - 20.6.)
- Derek Fabel
- Lynn Evans





**Figure 4:** (a) Mark Brandon, Jörg Robl and Kurt Stüwe in the field in June. (b) With Martin Meschede and Wolfgang Frisch in Greifswald during the exhibition opening in June. (c) Laszlo Fodor explaining wind blown striations during the ILP Balaton conference. (d) Project partners Thomas Hickler and Todd Ehlers enjoying the Alps Array meeting in Frankfurt in November. (e) Rob Watson in the Badl cave in January. (f) Field work in Chile during the start up meeting of the EARTHSHAPE project in March. (g) The strangest rock in the world: Orbiculites in Chile. (h) Rob Watson and Lukas Plan in front of the Mammuthöhle during field work in Mai.



## TEACHING AND EDITING ACTIVITIES

---

### EDITORIAL RESPONSIBILITIES

- Lecture Notes in Earth Science (Springer) (Editor)
- Journal of the Virtual Explorer (editorial board member)
- Austrian Journal of Earth Science (editorial board member)

### TEACHING SUMMER TERM 2019:

- Geologie von Österreich (Lehramt, etwa 80 Students, 2 Tutors)
- Neotectonics and tectonic geomorphology (MSc curriculum)
- Geological II Field trip (Präbichl – 1 day)

### TEACHING WINTER TERM 2019/20:

- Geodynamics of the Lithosphere (MSc curriculum)
- Tectonic Modelling (MSc curriculum)
- Erdwissenschaftliches Seminar (BSc)
- Geologie der Erde (BSc)
- First Year field trip (with Hauzenberger)